

## Register:

Register now, using the serial number on your receiver to receive special product offers, which may include an extended warranty, free software or other benefits. Product offers contingent upon meeting Luidia requirements.

[portal.e-beam.com](http://portal.e-beam.com)

## Support:

[e-beam.com/support](http://e-beam.com/support)

## Connect:

 [twitter.com/eBeam](https://twitter.com/eBeam)

 search for eBeam

 [youtube.com/LuidiaTech](https://youtube.com/LuidiaTech)



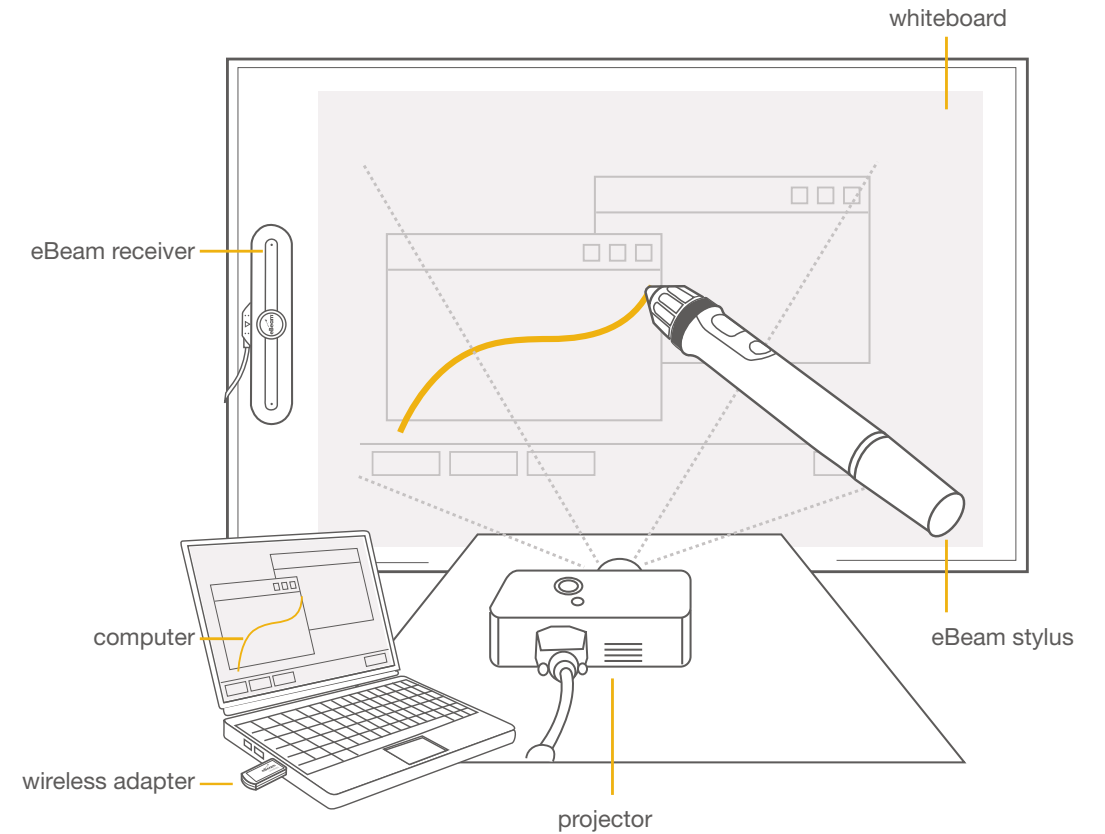
[www.e-beam.com](http://www.e-beam.com) | 1.888.99.eBeam

Luidia Inc. is the creator of eBeam® interactive technology that helps the world capture and share content. The company's products are utilized by organizations of all sizes, with hundreds of thousands of users across multiple industries and geographies.

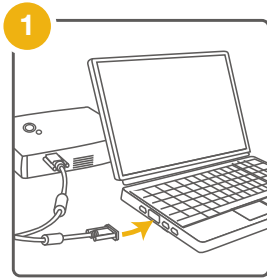
©2013 Luidia, Inc. All rights reserved. eBeam and the Luidia logo are registered trademarks of Luidia, Inc. Other product names and logos are the property of their respective owners.



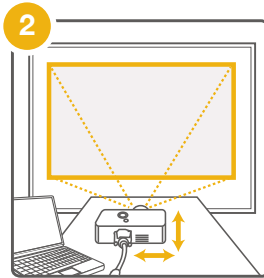
Quick Setup



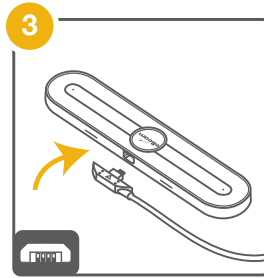
PN 46003125



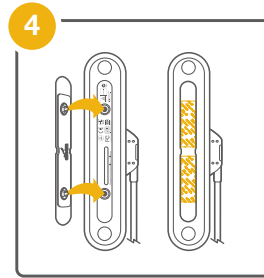
1  
Connect your projector to your computer.



2  
Turn on your projector and align/focus the image on the board.

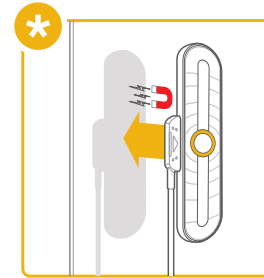


3  
Connect the eBeam USB cable to your eBeam receiver.

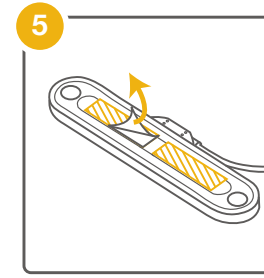


4  
Place a mounting plate onto the back of the receiver with the Command adhesive side facing out.

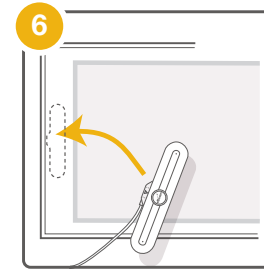
*\*(See note for magnetic mounting option)*



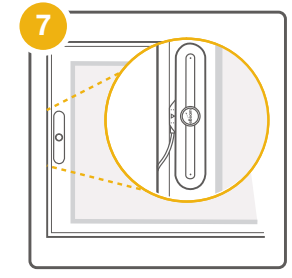
\*  
\*Note: You also can place the receiver directly onto magnetic surfaces without using the plate.



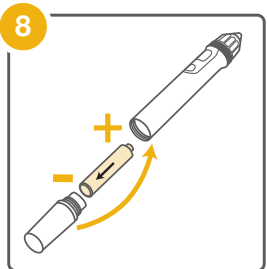
5  
Peel the Command Adhesive backing from the receiver.



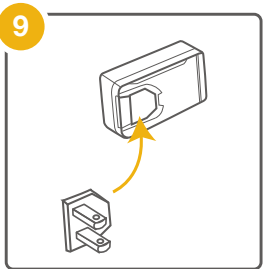
6  
Hold the receiver and prepare to place it carefully in the indicated location.



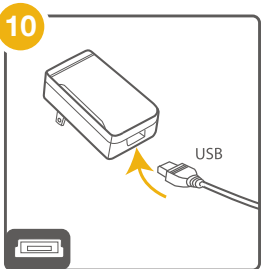
7  
Place the receiver so that it is centered vertically on the board, and parallel to the frame.



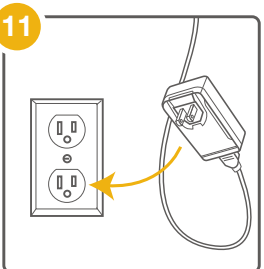
8  
Locate the eBeam stylus and twist open the battery cartridge. Install AAA battery in your eBeam stylus.



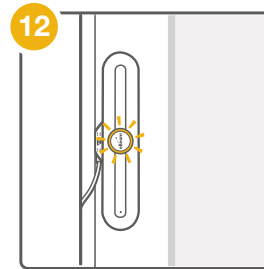
9  
Select the correct power supply connector.



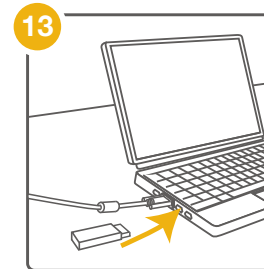
10  
Connect the eBeam USB cable to the power supply.



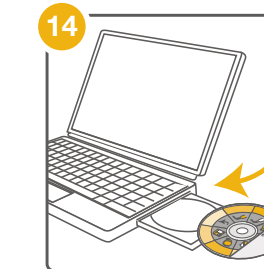
11  
Connect the power supply to the wall.



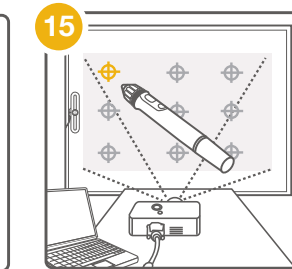
12  
The receiver light will blink, indicating that it is ready to connect wirelessly.



13  
Connect the wireless adapter to the USB port.



14  
Insert the eBeam software CD and install.



15  
Launch the eBeam software, calibrate the system.

**Congratulations! Your eBeam system is now ready for use.**